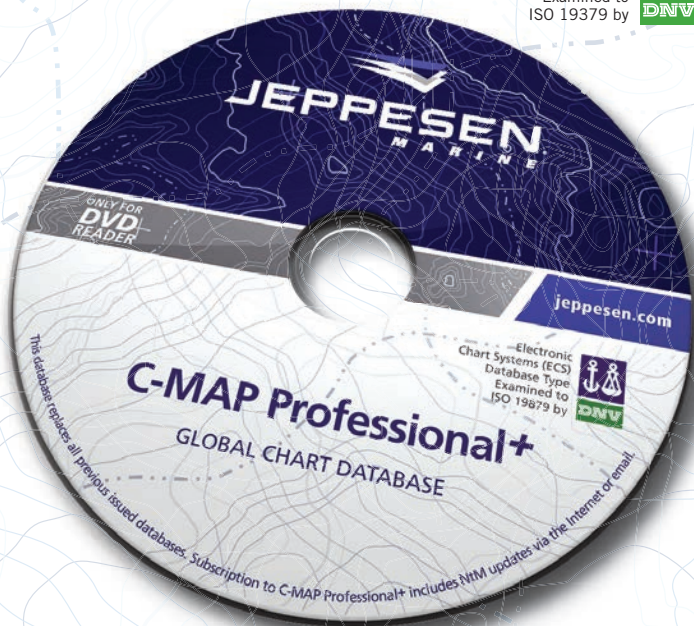




C-MAP Professional/Professional+

jeppesen.com

Electronic
Chart Systems (ECS)
Database Type
Examined to
ISO 19379 by



Product and Services Guide

Contents

Introduction	3
Product description.....	3
C-MAP Professional+	3
C-MAP Professional	3
Advantages with C-MAP Professional+	3
How to upgrade from Professional to Professional+	4
Presentation of chart database.....	4
Subscription.....	5
Zones, Areas and Cells	5
Licensing	6
License period	6
Registering your license code	6
Extending your chart portfolio	7
Renewal of subscription.....	7
Non-renewal of subscription.....	7
One-off purchase	8
C-MAP Update Service.....	8
New version of database.....	8
Updates (NtM's)	9
Contact information.....	11

Introduction

This Product and Services Guide provides basic generic information on registering databases, applying licenses and updating your charts. However, the manufacturer of your equipment may have implemented these routines in a slightly different way. For detailed instructions on how to install, license and start using the chart databases for your specific system, please refer to the relevant manufacturer's equipment user guide.

Product description

C-MAP Professional+

C-MAP Professional+ is an innovative and dynamic worldwide vector chart database produced by Jeppesen Marine, and is mostly derived from paper charts. The coverage is continuously being expanded and new kinds of supplementary data are frequently added to the product.

This product is distributed in the Jeppesen's DNV type approved SENC format, CM-93/3. SENC distribution makes the chart data available and secure in a data format ready to be used on the ECDIS/ECS, and is supported by the majority of system brands on the market. Professional+ is delivered on one DVD.

C-MAP Professional

C-MAP Professional (formerly known as WORLD) is the predecessor to Professional+. Professional has a limited chart portfolio that has not been expanded since 2006. Supplementary data is not available due to space limitations. Professional is delivered on one CD.

Advantages with C-MAP Professional+

Professional+ has at least a 25% larger chart portfolio than Professional as per 2009, and this percentage will increase continuously.

If your ECDIS/ECS system supports supplementary data, you will have access to see the following types of information:

- Weather Forecasts*
- Pirate Activity information*
- Tides (incl. Tidal Streams)

- SAR (Search and Rescue information)
- GMDSS (Global Maritime Distress Safety System)
- C-Routes (Route planning)
- Topology (3D-effect)
- Improved background and overview charts

* Weather Forecasting and Pirate information services requires licensing, please contact your local Jeppesen Marine office or your chart distributor for price/license information.

Note: C-MAP Professional/Professional+ should only be used as a navigational aid, and does not replace the need for paper charts. For paperless navigation, Jeppesen Marine is also a distributor of official ENC's.

How to upgrade from Professional to Professional+

You can upgrade from Professional to the Professional+ free of charge. Your annual subscription cost will also remain the same.

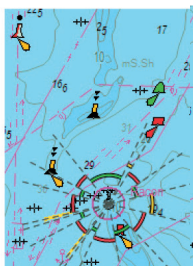
If you want an upgrade to Professional+, please check that your ECDIS/ECS has a DVD drive, and contact your system supplier to ensure that your system is able to read the Professional+ database.

Presentation of chart database

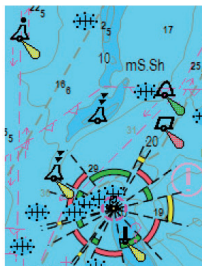
Depending on your system supplier, there can be different options how to view the Professional/Professional+ database on the screen.

Two of the presentation options may be:

- C-MAP: Presentation is similar to traditional paper chart presentation.
- S-52: Presentation is in accordance with the IHO S-52 standard.



C-MAP



S-52

Subscription

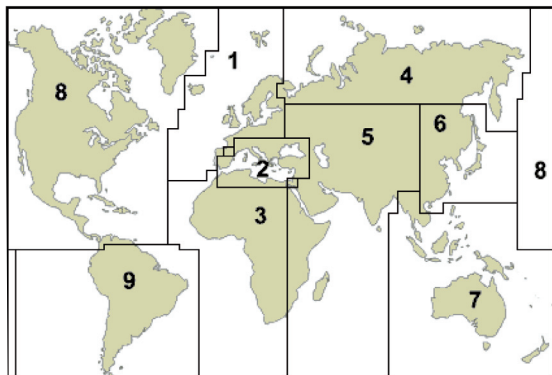
Zones, Areas and Cells

The license structure is based on Zones, Areas and Cells. This allows customers to order coverage in accordance with individual needs.

The entire world is divided into 9 zones, and each zone is divided into several areas. Additionally some special areas are defined. The special areas contain some major shipping routes, and may include parts from several zones and areas.

Chart coverage available for subscriptions can be worldwide or any combination of zones and areas.

Some zones are divided into cells (4X4 degrees), and these cells are only for purchase (not for subscription).



Zone 0 – Worldwide Coverage

Zone 1 – Northern Europe

Zone 2 – Mediterranean Sea

Zone 3 – West and South Africa

Zone 4 – Arctic coast Europe and Asia

Zone 5 – West Indian Ocean, Red Sea, Arabian Sea and the Gulf

Zone 6 – Coast of China, Korea and Japan

Zone 7 – Indonesia, Australia, New Zealand and the Ocean

Zone 8 – Coast of North and Central America, Gulf of Mexico and the Caribbean Sea

Zone 9 – Coast of South America

Note: To get an up-to-date overview of available chart coverage from Jeppesen Marine, please download the free version of our Chart Catalog, available on www.jeppesen.com/marine.

Licensing

A license is required to view detailed charts on the screen. Without a license you will only see background charts.

For C-MAP Professional+: License for the types of supplementary data that are free of charge is automatically activated. Certain other types of supplementary data carry an additional cost and licenses must be purchased in the normal way.

License period

A license lasts for a period of 12 months. Any new charts that become available within the license period will be automatically provided at no additional cost.

Registering your license code

Jeppesen Marine send out licenses in the form of a PASSWORD.USR file attached to an email. The license code consists of a string of 16 hexadecimal characters ranging from 1 to 9 and A to F. To register the license code, please follow your manufacturer's equipment user guide for detailed instructions.

Apply license from file:

If you have the PASSWORD.USR file available, and your software supports "Import from file" please apply the license using this option. If you use this method, you do not have to insert this information manually.

Apply license manually:

If you don't have the PASSWORD.USR file available, or your software doesn't support "Import from file", you have to apply the license by highlighting the Zones or Areas that you are going to license and then insert the license codes manually. If your ECDIS/ECS allows it, we recommend that you insert the codes by using Ctrl +C (copy) and Ctrl +V (paste) so as to avoid typing errors.

Note: If you use a separate PC, please transfer the file PASSWORD.USR or text string into the ECDIS/ECS via a USB memory stick or other transfer media.

Extending your chart portfolio

Additional Zones and Areas may be ordered during the license period. You will only be charged for the remaining time of the license period. To order additional charts, please send an order form to your local Jeppesen Marine office, or use the C -MAP Chart Catalog application. You can also send the order via your chart distributor.

Please remember to include all required information such as the IMO number of the ship, invoicing and delivery addresses.

Within a few working hours after receiving the order, Jeppesen Marine will send you the required license code(s). If for any reason the license codes are not received, please contact your local Jeppesen Marine office, or your chart distributor.

Note: *The order form can be found on www.jeppesen.com/marine.*

Renewal of subscription

Jeppesen Marine will send you a subscription renewal form approximately 2 months prior to the expiry date. If a new chart portfolio is required, please return a completed renewal form latest 6 weeks before the expiry date to your local Jeppesen Marine office, or contact your chart distributor. If no information about the renewal is sent to Jeppesen the same chart coverage as the previous year will be invoiced. Upon receipt of your payment Jeppesen Marine will immediately issue a new license to ensure uninterrupted access to the chart data.

In addition to this e-mail, a warning message will appear on the screen prior to the expiry date and inform you that the license needs to be renewed.

Note: *After a certain time after the expiry date of the licenses, the chart database will no longer be displayed. It is therefore very important that Jeppesen Marine receives payment in good time so as to ensure continuity of the service.*

Non-renewal of subscription

To terminate a subscription license, please return a completed non-renewal form to your local Jeppesen office, or contact your chart distributor. Jeppesen Marine needs to be informed about the termination at least three months before the renewal date.

The non-renewal form can be found on www.jeppesen.com/marine. If by any reason you don't have this form available, you can contact your local Jeppesen office and inform about the subscription termination.

One-off purchase

A one-off purchase license does not have any time limitation (it will never expire). It is often used for systems not being used for navigation, like offices, vessel tracking, survey etc. A one-off purchase license is tied to a certain version of the database. This type of license does not allow you to update your database via the C-MAP Update Service. However a new and updated chart database can be provided whenever requested at a charge of 50% of the basic price corresponding to chart coverage.

C-MAP Update Service

Depending on your requirements, technical outfit and communication capacity, you can choose different options to keep your onboard databases updated. It is important that you keep the Professional/Professional+ updated on a frequently basis by installing a new version of the database. To keep the database more frequently updated, Jeppesen Marine publishes updates every working day.

C-MAP Update Service	Distribution	Updates (NtMs)	New charts	New Editions of charts
CD/DVD	CD/DVD	X	X	X
Online +	HTTP	X	X	X
Online	HTTP and E-mail	X		

Note: The chart subscription fee includes unlimited use of the C-MAP Update Service with the exception of the airtime cost.

New version of database

Jeppesen Marine releases a new version of the chart database including new charts, new edition of charts and updates on a weekly basis. You can choose two different options of how to update the database; either by installing a new update CD/DVD or by using the Online+ service.

You can check the status for the latest database releases on our web site.

C-MAP Update Service CD/DVD

The database is distributed via CD or DVD regularly (you decide the frequency). Please note that this database should be installed immediately after receiving the CD/DVD. Your existing licenses will still be valid and you do not need to request new licenses from Jeppesen Marine.

CD: Professional

DVD: Professional+

Note: If you receive more than one updating CD/DVD at the same time, you only need to install the most recent one.

C-MAP Update Service Online+

To be able to update the database wherever and whenever, Online+ is the best option. This service enables you to renew your database via an online connection via the Internet. Please note that this service requires bandwidth of high quality and capacity. In addition to updating the database using Online+, Jeppesen recommends that you receive an updated CD/DVD at least every 4 months.

For a free download of the Online+ Service, please visit

www.jeppesen.com/marine.

Updates (NtM's)

C-MAP Update Service Online

In addition to installing a new version of the database frequently, you can apply daily updates via the Online service. The updates are made available via online communication (e-mail or Internet/HTTP). This service is implemented in most of the ECDIS and ECS systems based on Jeppesen technology. Please follow your manufacturer's equipment user guide for detailed instructions. New charts and new edition of charts is not included in this service, and has to be received regularly via CD/DVD or Online+.

***Note:** Updates for a previous edition of a chart will stop when there is a new edition included in the latest database. To receive updates to new editions and new charts, please be sure to have a new database installed regularly.*

Contact information

For support please contact Jeppesen Marine or your chart distributor.
For question related to hardware, we advise you to contact your system supplier.

Contact details for Jeppesen Marine, Norway:

Jeppesen Marine AS

P.O. Box 212
N-4379 Egersund
Norway

Phone +47 51 46 47 00

Fax +47 51 46 47 01

Web www.jeppesen.com/marine

Technical support: technical.marine@jeppesen.com

License: license.marine@jeppesen.com

Online updating support: updatesupport@jeppesen.com

